

Through *the* NEEDLE

BERNINA®

Issue 29

\$6.95

your creative companion



15

Retail Restyle X3



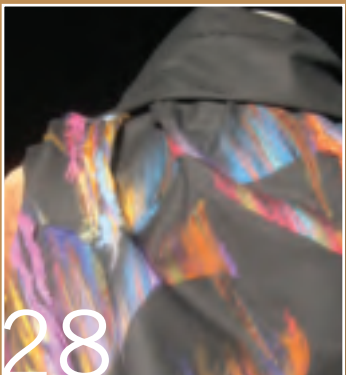
24

Cutsie Oopsie Baby Burp Cloth



10

"Putting it in Reverse"



28

The Fold Over...



Squares & Circles Swing Jacket

Page 8

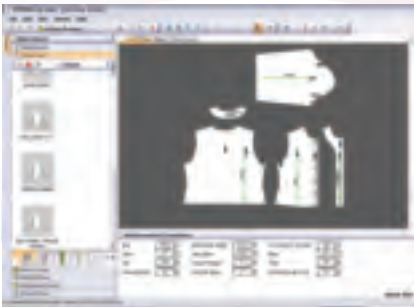
BERNINA 830 Project

Squares & Circles Swing Jacket

BY SUSAN FEARS



Modify Jacket Pattern

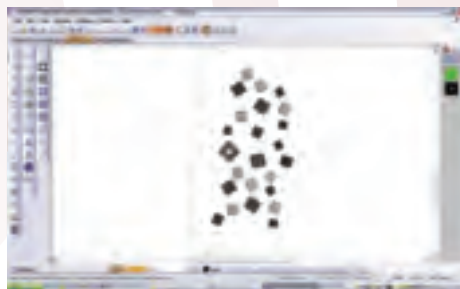


Customize the Boxy Jacket pattern from the My Label 3-D Fashion Pattern Software. Using the Style Properties measurements, make the following changes to the pattern: change the sleeve to a $\frac{3}{4}$ length, widen the hem edge, and widen the jacket to create a swing. Use the collar from the Military Jacket for the Boxy Jacket. Print the pattern and cut the fabric out.

Replace the hems on the jacket with facings. The embroidery width is 6"; draw facings that cover all the embroidery on the inside of the unlined jacket. To do this, place a ruler on the seam line and draw a facing that is 6" plus $\frac{5}{8}$ " seam allowance. Cut the facings. The hems will be eliminated after the embroidery is done.

Create Embroidery Templates

Scan the sleeve pattern hem edge, jacket front hem edge, jacket back hem edge, and the entire collar from the Picture view in the Designer Plus software. Use the Open Object tool > Single Outline to trace around the cutline of the pattern. Be sure the seam lines are visible (draw them in if necessary); they will be important for placing the embroideries. Create a separate file for each pattern piece.



Supplies

- BERNINA 830
- Jumbo Hoop
- V5 DesignerPlus Software
- My Label 3D Fashion Pattern Software or boxy style jacket pattern
- Computer with scanner
- Fabric and notions according to pattern instructions plus extra fabric for larger facings
- OESD LightWeight Tear-Away stabilizer
- 101 Quilt Basting Spray
- Isacord Embroidery thread in charcoal (4174) or black (0020)
- Black 60-weight cotton thread for embroidery bobbin
- Size 75 Organ embroidery needles, regular or titanium
- Approximately 50 charcoal or black pearl buttons in various sizes
- Button Sew-On Foot #18

Open embroidery design #SM28 from the 830 Susanne Muller folder. The design can be obtained by reading from the 830 into the software, or using the Backup Design CD. Use File > Insert Design to add the embroidery to the placement line files. If the design is too long for the area (has too many elements), ungroup the design and delete the extraneous parts of the design. If the design does not fill the area, ungroup and copy additional patterns or insert another design. Save the finished designs.

Use the View > Measure tool to determine placement of the design by accurately measuring the distance from the embroidery design to the seam line.

Create files for the Jacket Back, Jacket Front, Sleeve, and Collar. The files for the jacket front and sleeves will be mirrored to embroider the opposite sides.

For the collar embroidery, ungroup the design and place individual motifs on the collar, avoiding the seams. "Toss" the design randomly to create an interesting pattern even though the embroideries may only be one design deep.

Stitch Embroidery Designs

Check the hoop sizes – due to the width of the embroideries, plus the placement lines, the Jumbo hoop is required. Send the designs to the machine using the cable or save to a USB stick. *Note: Be sure to update the V5 software with the patch to include the jumbo hoop files in the hoop choices. The patch can be found on the www.berninausa.com website under Support > Downloads.*

Hoop tear-away stabilizer in the Jumbo hoop and stitch the placement line.



Remove the hoop and spray with 101 Quilt Basting Spray. Lay the cutting line of the fabric on the embroidered placement line and smooth into position.

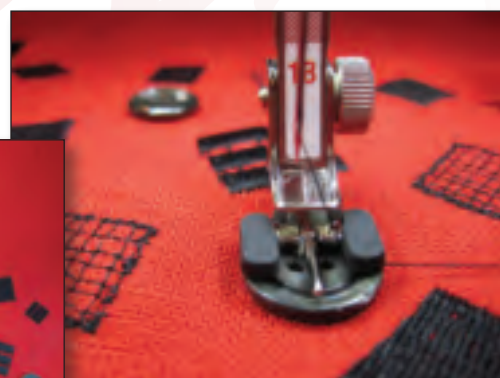


Engage the Basting Outline to further secure the fabric to the stabilizer if desired. Embroider all the edges and remove the excess stabilizer.

Construct Embellished Jacket

Redraw the cutting lines on the paper pattern so there is a 5/8" seam allowance instead of the traditional hem. Lay the pattern pieces on the embroidered fabric and re-cut the garment edges. Re-cutting after stitching the embroidery eliminates any fabric distortion caused by the embroidery.

Use the button-sew on foot to add charcoal pearl buttons in some of the open spaces in the embroidery.



Be sure to place the buttons randomly to maintain the random pattern of the embroidery.

Finish the garment edges using a 3-thread overlock on the serger.

Assemble the jacket as directed by the My Label instructions; tack facings with a hand whipstitch if desired. Attach shoulder pads. *Tip: If covering the shoulder pads to match the fabric, engage the BERNINA Dual Feed when stitching the fabric to the shoulder pads.*

