

BERNINA⁺

Zippered Pouch Stitch Combinations

Created by Susan Fears

BERNINA 830

With the BERNINA 830, celebrate stitches designed as sewing combinations, but imported into embroidery and embroidered. Use Endless Embroidery to create a background and overlay an embroidery design. Add several rows of bobbin-work for the finishing touches. Add a zip and sew up the sides for a great zippered pouch.

Visit www.bernausa.com
for additional projects and information.

Supplies

Machine & Accessories

- BERNINA 830 Sewing & Embroidery System
- Mega Hoop
- Open Embroidery Foot #20C
- Dual Feed Zipper Foot #4D

Fabric & Notions

- 9" x 18" piece of silk dupioni
- 9" x 18" piece of lining fabric
- 9" x 18" piece of fusible fleece
- Ultra Clean & Tear stabilizer
- Isacord thread for embroidery & embellishment
- Razzle Dazzle thread for bobbin work
- Embroidery bobbin thread
- Organ Embroidery needle, size 80 Sharp
- 9" Zipper

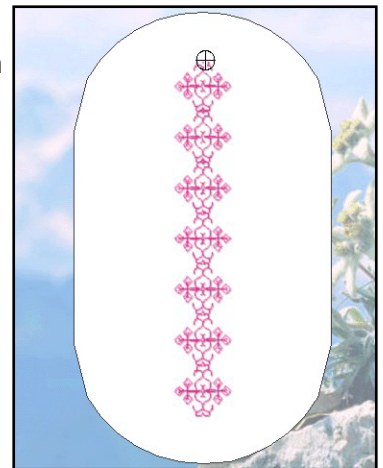
Fabric Prep

- Cut fabric approximately 9" x 18"
- Iron Fuse and Fleece to the backside of the fabric and hoop with Ultra clean and tear stabilizer in the Mega Hoop
- Create the following design on the BERNINA 830 – we will be bringing stitches into embroidery, then overlaying them with an embroidery pattern followed by some bobbinwork edging
- Add a lining and zipper to finish the pouch.



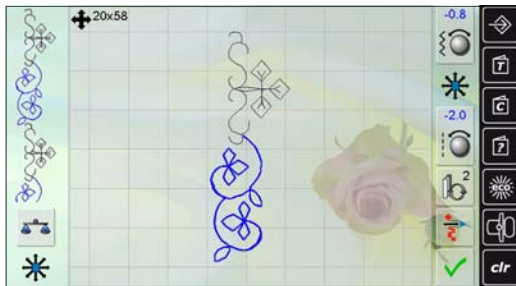
Create the Center Background Endless Embroidery Pattern

- In Sewing, select Stitch #1209
- Touch the embroidery module soft key
- Select the pattern from the My Designs folder
- Select the Mega hoop
- Select Endless Embroidery for 12 repeats and deactivate the reference marks
- Touch check to confirm
- Duplicate and delete the original endless embroidery column by touching the stitch and selecting the trashcan.
- When the second column is the only motif left, Duplicate and Mirror Image (left/right)
- Activate Zoom for a clearer view
- Drag and Drop so the stitch baseline of each column are touching
- Deactivate zoom
- Use the Retrieve Icon to select all and touch the move motif 2 times to center the design
- Save the design using the Save icon.



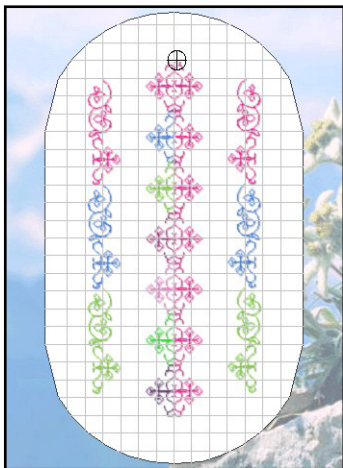
Create the Stitch Combination for Endless Embroidery

- Touch the embroidery module soft key to go to sewing
- Open Combi-Mode
- Select Menu 1200 and add stitches #1209 and #1207
- Select the Multifunction Icon and the Connecting Stitches icon



- Join the motifs using Drag and Drop
- Touch the screen to select the first stitch and Select Move Multiples
- Use the Multifunction knobs to connect the patterns (close the gap)
- Touch the embroidery module soft key and Select Get New (design)
- Select the adjusted stitch combination from the My Designs Folder

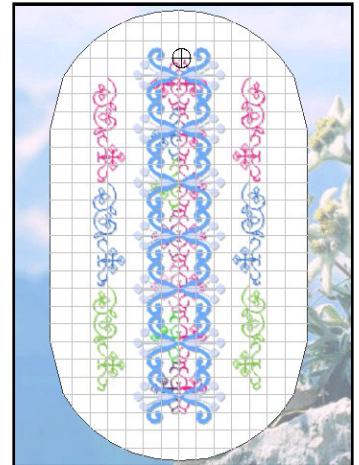
- Select the Mega hoop
- Select Endless Embroidery for 6 repeats, duplicate and delete the original
- Save this design
- Select New Motif and open the first arrangement
- Add the second arrangement to one side
- Duplicate (the side pattern) and move to the other side
- Save the design, This is the background design.



Create the Embroidery Overlay Pattern

- Select the New Motif Icon
- Select the Motifs folder>Louisa Meyer, design #6
- Select the Mega hoop
- Select Endless Embroidery for 12 repeats
- Duplicate and delete the original endless embroidery
- Center the design by touching the Move icon 2 times
- Duplicate and Mirror Image (left/right)

- Move so the baseline of each column are touching
- Use the Retrieve Icon to select all and touch the move motif 2 times to center the design
- Save the design using the Save icon.

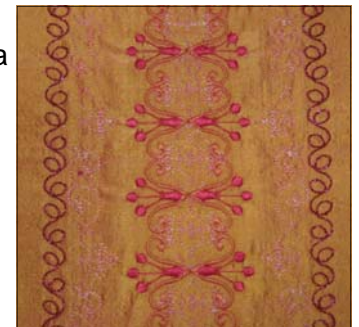


Combine the Designs

- Open the background embroidery design
- Add the Embroidery Overlay and center over the center column
- Save the design and embroider
- Be sure to deactivate the thread cutter when stitching endless stitches to avoid the unnecessary stop between stitches.

Add the Bobbin Work

- Wind Razzle Dazzle (or other thick thread) onto a Jumbo bobbin
- Thread the needle with matching Isacord thread
- Reduce the bobbin tension by adjusting the bobbin case with the multi-function tool about 2-3 clicks to the left
- Attach Foot #20C to the machine
- Test your settings on scrap fabric with stitch #698 to be sure the bobbin thread is getting pulled to the front and no needle thread is showing
- Draw lines on the stabilizer and sew with the embroidered side facing the feed dogs.
- Be sure to bring the bobbin thread tail up so it doesn't get caught in the stitches on front
- Be sure to watch for the bobbin sensor indicating bobbin thread availability.



Assembly

- Trim all sides so they are even
- Add a lining fabric cut to the same size
- Use the BERNINA Dual Feed Zipper Foot #4 to insert a zipper
- Turn pouch right sides together and make sure zipper tab leaves an opening for the bag to turn through after the sides are sewn
- Serge or sew the sides together
- Turn through the zipper opening and Enjoy!