

BERNINA 8 Series City Blooms Quilt

Created by Nina McVeigh

Fabrics from the Benartex City Blooms collection give this easy-to-piece quilt a bright, cheerful look. Use the wide-striped "Blooms and Stripes" print to create the impression of a pieced and appliquéd border without all the work! Pieced and quilted on the BERNINA 820, this is a great project for novice quilters, or experienced quilters looking for a quick-to-stitch project.



Finished size = 80" x 100"

Supplies

Fabric & Trims

- "City Blooms" by Benartex
 - 1 yard each of 8 different prints
 - 1 yard for binding
 - 2 yards for outer border
 - 6 yards for backing

See chart on page 3 for prints used in the sample quilt.

Notions

- 50 wt. Silk Finish Cotton thread for construction
- Jeans needle, size 70/10 for piecing
- Quilting thread
- Quilting needle, size 75/11 or 90/14
- Nifty Notions "Cut for the Cure" Ruler, 7" x 24"
- Rotary cutter and mat

Machine & Accessories

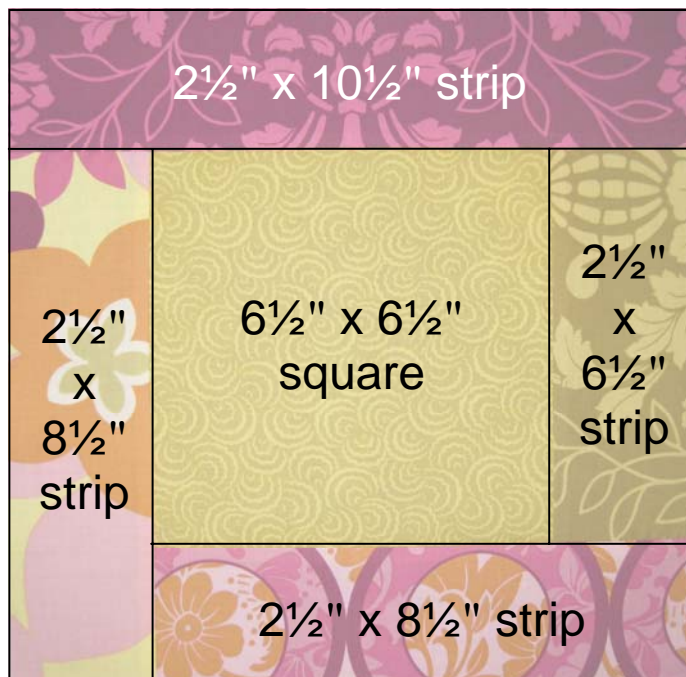
- BERNINA 820 or 830 Sewing Machine
- BERNINA Quilting Frame
- Patchwork Foot #37/37D **or**
Patchwork Foot with Guide #57/57D
- Freehand Quilting Foot #29/29C **or**
BERNINA Stitch Regulator #42

Cut the Fabric

- Cut a 6½" x 42" strip from each of the 8 fabrics.
 - Cut each strip into six 6½" x 6½" squares for a total of 48 squares.
- Cut forty-eight 2½" x 42" strips from the 8 fabric leftovers (six strips from each print).
- Sub-cut the strips into:
 - 48 pieces 2½" x 10½" (12 of each print)
 - 48 pieces 2½" x 6½" (12 of each print)
 - 96 pieces 2½" x 8½" (24 of each print)
- You may wish to cut an extra strip or two from each fabric and cut extra pieces so that as you piece the blocks you will have more fabric choices as you approach the end.
- Cut eight 10" x 42" strips for the borders.

Piece the Blocks

- ◆ Piece 48 blocks as shown in the diagram:



- ◆ Piece 8 rows of 6 blocks each. Blocks may be turned in any direction.
- ◆ Piece the 6 rows together to make a quilt top 6 blocks across and 8 blocks down. ($60\frac{1}{2}'' \times 80\frac{1}{2}''$ pieced rectangle.)

Add the Borders

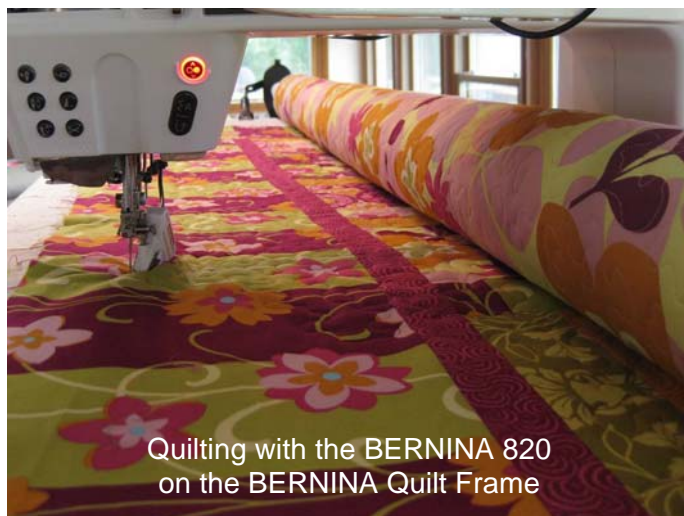
- ◆ Seam two border strips together with a mitered seam. Repeat three times for a total of four border pieces.
- ◆ Seam borders to sides; trim ends even.
- ◆ Seam borders to ends; trim ends even.

Piece the Backing

- ◆ Cut the 6 yard length of fabric in half.
- ◆ Seam the selvage edges together with a $\frac{1}{2}''$ seam allowance. Trim away selvages, leaving a $\frac{1}{4}''$ seam allowance. ($88'' \times 108''$ pieced rectangle.)

Quilt the Quilt

- ◆ Load the BERNINA Quilt Frame with backing, batting, and quilt top.
- ◆ Quilt as desired.



Alternative Method: Pin baste the layers together and quilt at the machine using Freehand Quilting Foot #29/29C or BERNINA Stitch Regulator #42.

Bind the Quilt

- ◆ Cut $2\frac{1}{4}''$ bias strips from the binding fabric.
- ◆ Bind the edges of the quilt using a double binding technique.

About the fabric:

*Kitty Yoshida has done it again with an oh-so-cool urban look that truly bursts with color and texture! You'll find huge flowers in shades of pink, teal or tangerine; elegant damask, cool rag rug textures, and much more. Use **City Blooms** whenever you want a touch of true urban chic.*

For additional City Blooms quilts, see www.benartex.com.

Visit www.berninausa.com today!

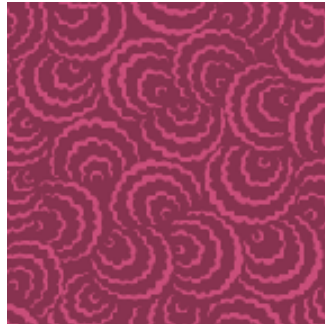
1 yard of each of the following EIGHT fabrics



Damask
Magenta
Style: 2321
Color: 88



Damask
Yellow/Lime
Style: 2321
Color: 44



Swirls & Twirls
Magenta
Style: 2324
Color: 88



City Blooms
Orange/Magenta
Style: 2321
Color: 33



Blooms & Stripes
Magenta
Style: 2322
Color: 33



Swirls & Twirls
Orange
Style: 2324
Color: 33



Brocade & Circles
Orange/Magenta
Style: 2320
Color: 33



Swirls & Twirls
Lime
Style: 2324
Color: 44

Border: 2 yards

Backing: 6 yards

Binding: 1 yard



Damask Magenta
Style: 2321
Color: 88



Damask Magenta
Style: 2321
Color: 88



Damask Magenta
Style: 2321
Color: 88