

## Hardanger Embroidered Linen Table Runner

Created by Nina McVeigh



*This hardanger embroidered table runner looks like an antique heirloom, but you can make one of your own using your embroidery machine and a piece of plain linen.*

### Supplies

- ◆ OESD #886 Heritage Creations: Hardanger by Gail Tibbetts
- ◆ OESD AquaMesh Plus Stabilizer
- ◆ Linen, 18" x 24"
- ◆ Topstitch needle, size #90
- ◆ Double needle, size #2.0/80
- ◆ 30 weight cotton embroidery thread
- ◆ Cotton bobbin fill to match embroidery thread
  
- ◆ BERNINA Embroidery Software
- ◆ Jumbo Hoop for BERNINA 830
- ◆ BERNINA 830\*

*\* Design may be stitched on other embroidery machines, but would need to be opened in BERNINA Embroidery Software and multi-hooped.*

### Create the Design

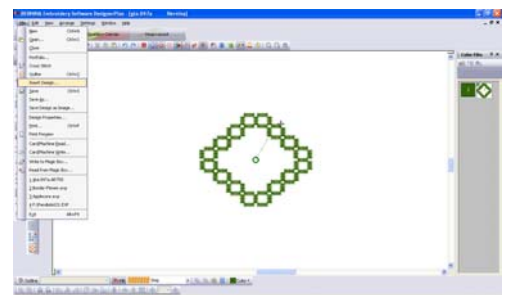
Open your BERNINA EditorPlus or DesignerPlus Embroidery Software.

Open design #CC88669 from the Hardanger collection.

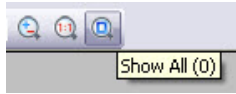
Right click on the Hoop icon and select Jumbo Hoop #26.



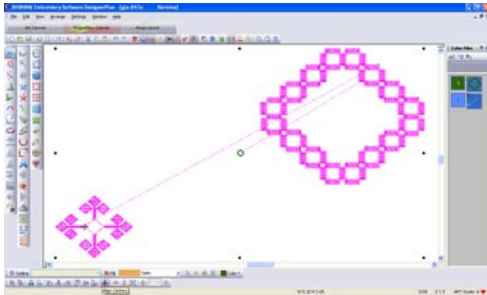
Go to File > Insert Design and select #CC88608.



Select Show All.



Select both designs on screen and then Align Centers.

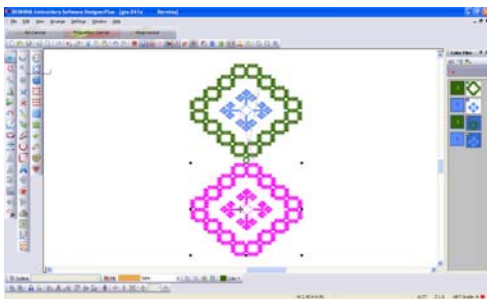


During the process of building this design you will be using the Group and Ungroup icons. These icons are located in the lower left corner of the screen.



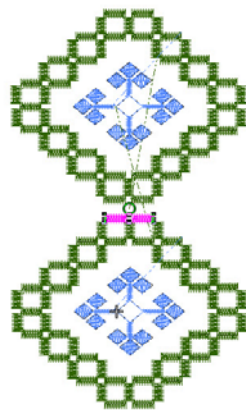
Save a copy of this combined design by going to File > Save As > name the file > save to a selected folder.

Back on the screen, with the design selected, right click on the design and drag a copy of the design below the original. With the copy highlighted, Ungroup the design.

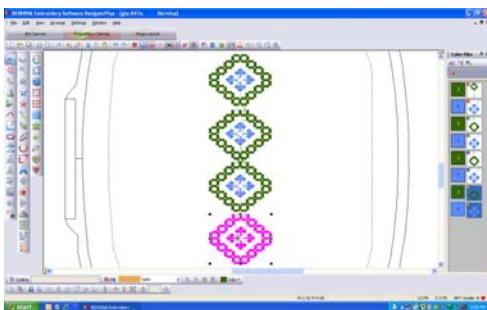


Deselect by clicking to the side of the design. Select the top two bars in the design and delete.

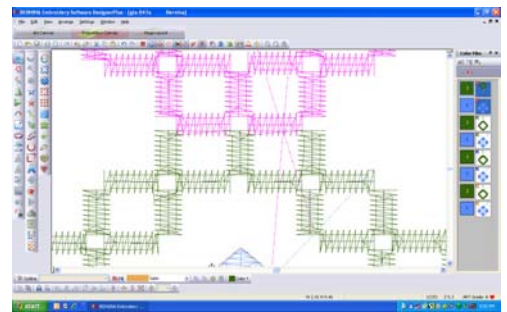
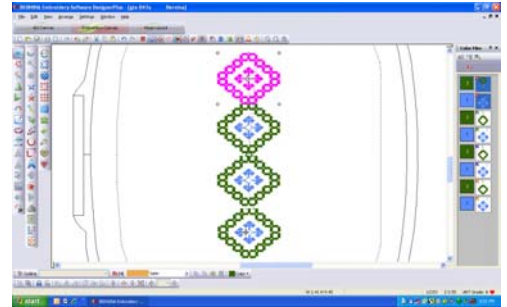
Select the remaining portion of the design by drawing a box around the design. Group.



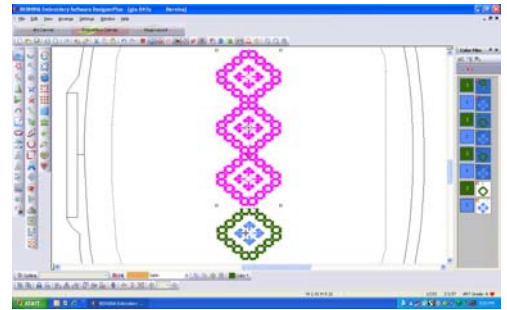
Right click on the highlighted design and drag a clone below the original. Repeat. You should now have a row of four designs.



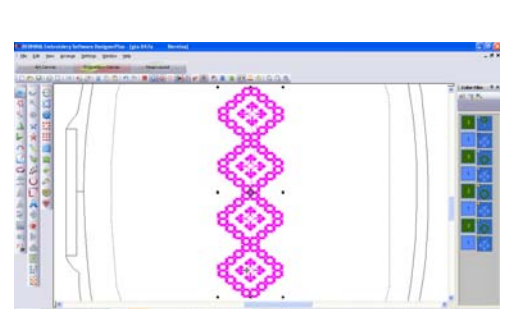
Starting with the top design, move down so that the bottom two bars of the design fit into the space where the top two bars of the copy were deleted.



Move the two designs to fit on top of the third. Group.

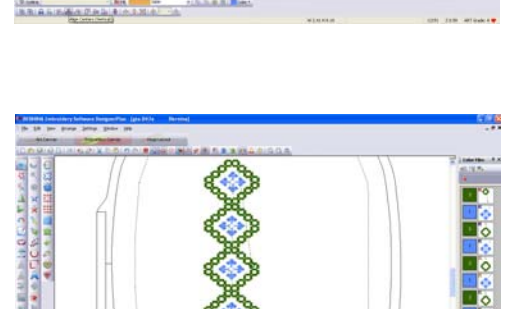


Move the three to fit on top of the fourth. Group.

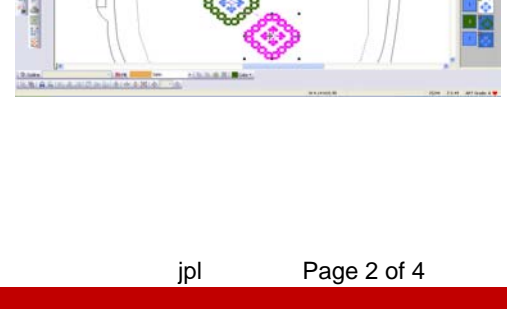


With all designs selected, Align Centers (Vertical) .

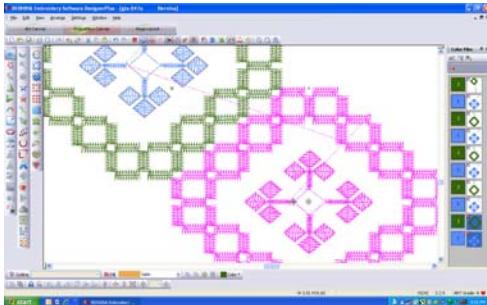
When the placement is correct, Group all four designs.



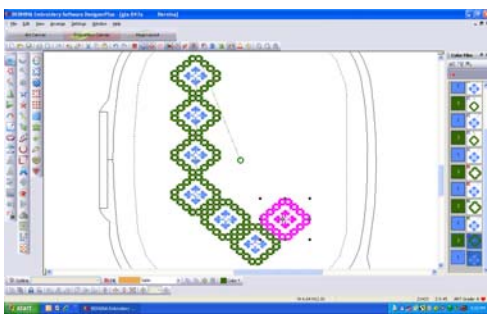
Insert the saved design.



Place to the side as shown and fine tune the placement.

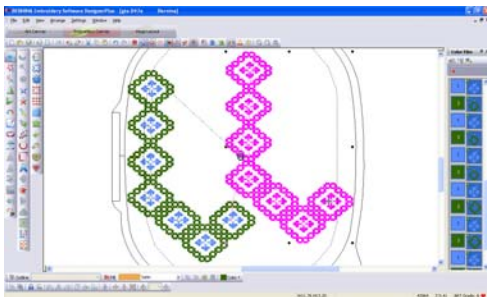


Place two more designs as shown.



Select the entire design and Group.

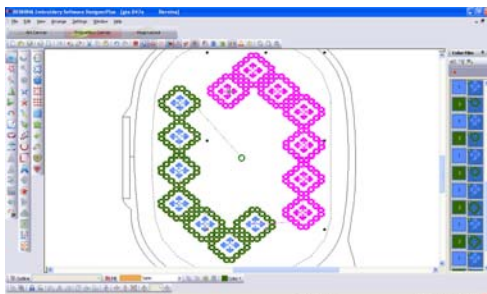
Make a copy of the entire design.



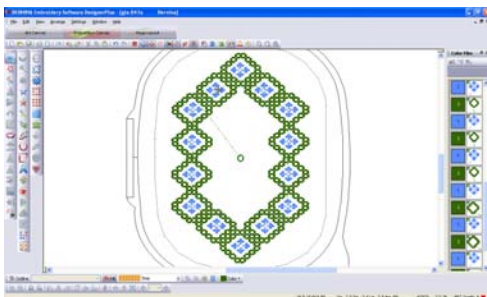
With the copy selected, select Mirror Horizontal and Mirror Vertical.



Move the copy into place, completing the outside design. Use the arrow keys to fine tune placement.

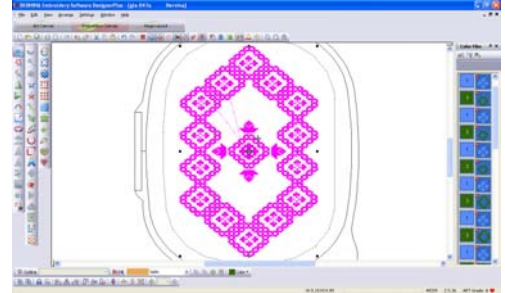
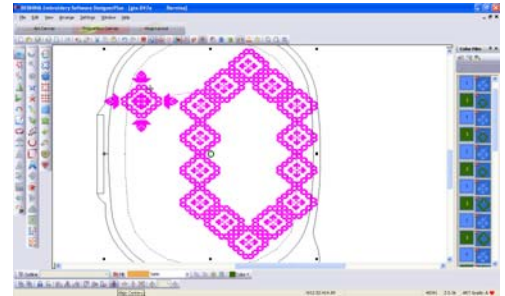


Group the design.



Insert design #CC88668.

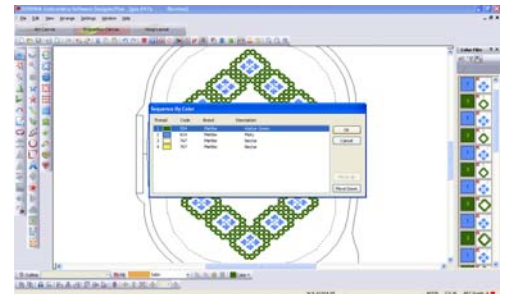
With both designs selected, click on the Align Centers icon.



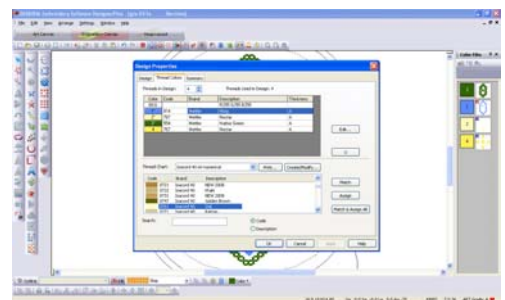
To eliminate all the color stops, select the design and click on the Sequence by Color icon.

Click OK in the dialog box that appears.

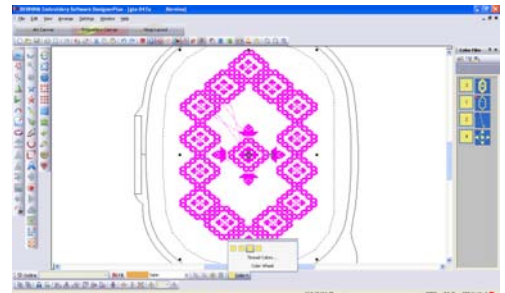
You now have four color changes.



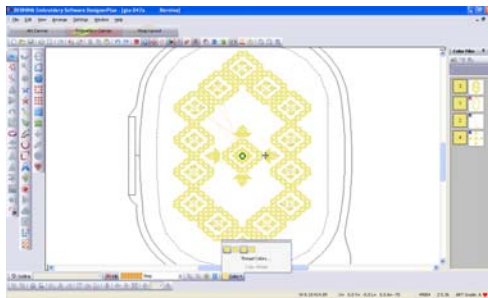
However, this is a one color design. Go to Settings > Thread Colors. Choose the Isacord 40-wt Numerical Chart.



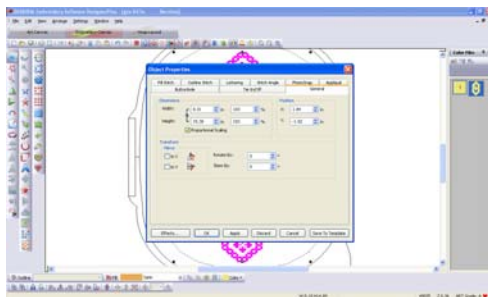
Select the color of your choice and Assign it to each of the four colors; select OK.



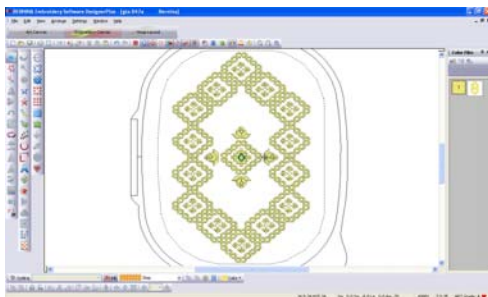
Go to Colors and select any one of the color chips as they are all the same. This will create a one color design.



With the entire design selected, right click on the screen to open Object Properties. Go to the General tab. Select Proportional Scaling and enlarge the design to 103%. Click OK.



The design is now finished. To view the design in stitches go to the Show Artistic View icon.



You are now ready to transfer the design to the embroidery machine. (If you are not using a BERNINA 830 Jumbo Hoop you will need to use the Multi-Hooping feature of the BERNINA Embroidery Software to split the design into sections.)

## Embroider the Design

Mark the center of the fabric.

Hoop the OESD AquaMesh Plus water-soluble stabilizer with the paper side up. Remove the paper and stick the fabric down to the sticky side of the stabilizer.

Insert the #90 Topstitch needle in the machine.

Thread the needle with the 30 weight cotton embroidery thread and the bobbin with bobbin fill thread that matches the top thread.

Embroider the design.

When the design is finished, remove as much stabilizer as possible. Wash the fabric to remove the rest of the stabilizer.

Press the project while still damp from the back side on top of a soft towel. Press the fabric dry.

From the right side, mark lines 3" from the outermost edge of the embroidered design. Fold the excess fabric to the back along these lines.

Draw a line at each corner, 45° from the fold line. Fold the corner and stitch on this line.



Trim the seam allowances and trim the corner.



Press this seam open.



Turn right side out and press the mitered corner.



Insert the Double needle in the machine and thread with 30 weight cotton thread.

Stitch around the hem edge, from the right side,  $\frac{3}{4}$ " from the fold.

Trim excess fabric from the back side to stitching. *Optional: Stitch around the embroidered design to highlight the design.*

Visit [www.berninausa.com](http://www.berninausa.com)  
for additional projects and information.

