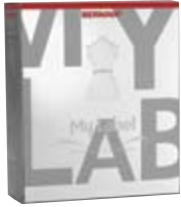


One Pattern for All Seasons

By Debbie Lashbrook

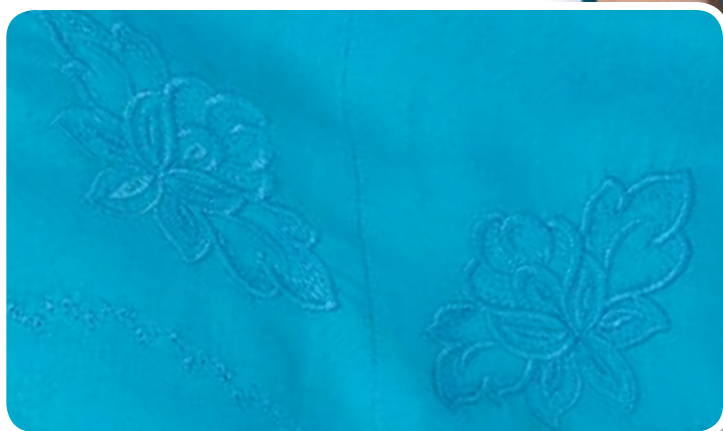
wearable

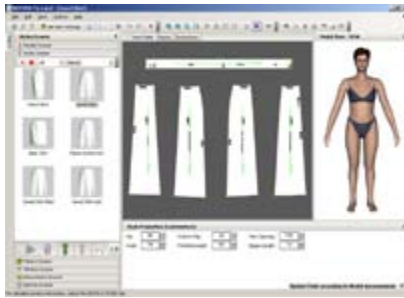


My Label™ is a revolutionary new pattern fitting software recently introduced by Bernina. The software uses CAD technologies that have been used for over 20 years in clothing manufacturing. The patterns in the software use made-to-measure tools that combine pattern making, sizing, and parametric systems that replicate the manual drafting process.

When entering the 47 measurements for the program, the measurements morph a three-dimensional model and fit the patterns to your own size. The underbust measurement changes the model's overall shape to simulate your own; then as other measurements are entered, the model changes to your specific measurements. When a style is selected, the measurements from your model are used to automatically alter the pattern for your measurements. The patterns are altered using the same amount of ease for all body types. The Style Properties for each garment can be changed to your preferred fit for ease and style; then the style can be visualized by draping the garment on your personalized model.

The My Label screen has four sections: the Studio, the Worktable, the Properties, and the Model. The Studio section is used to select models, garments, fabrics, stitches, embroideries, and buttons. Think of it as your shopping mall. The Worktable section shows the pattern pieces without seam allowances, pattern and measurement instructions, and information about yardage required and the number of pieces to cut. The Properties section is where measurements are entered and where style, fabric, embroidery, buttons and stitches can be altered. The Model section shows the model in three dimensions.





You can rotate the model, zoom in on the model, and check the ease of the garment on the model. When the pattern is printed, 5/8" seam allowances are included. Embroidery placement on the garment is easy as the center of the design and the outer boundary of the design is clearly marked on your pattern. Stitching lines are also marked on the fabric if you add decorative stitches to a garment, placement is clearly noted. In addition, there are several help documents available at the click of the mouse.

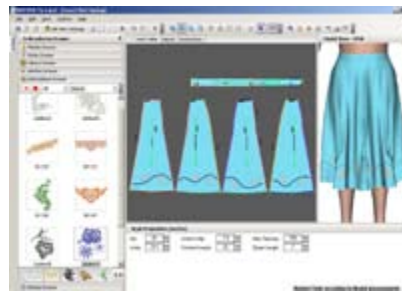
Twenty basic styles can be altered in many ways to create garments that fit. In this article, we will explore the basic gore skirt and use this one pattern to make a skirt for each season with its own unique look.

After Nina was selected as the base model, the gore skirt was selected from the skirt drawer. You'll find the default skirt has 1 3/4" ease in the hips, 23 5/8" finished length, and a hem opening that is flared 13" larger than the hip. By altering any of these style properties, adaptations can be made to the skirt for a different look for each season. Default skirt measurements are found by clicking on the Instruction tab in the Worktable section after a pattern is selected.



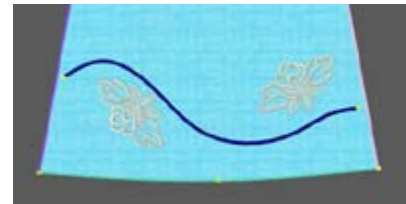
For Spring, an easy-flowing style was created from the gore skirt by increasing the hem opening to 100", increasing the hip to 50", and increasing the length to 26".

Turquoise gauze, a lightweight and drapeable fabric, was chosen for the summer.



An embroidery design, the Lace Corner from the Studio Bernina Swiss Designs, BERNINA® 75th Jubilee collection, was added around the bottom of the skirt. Once placed on the skirt, designs can be individually selected, moved and rotated as desired by manipulating the embroidery properties features.

A decorative stitch was added to the skirt to give the embroidery movement and continuity. The zoom features of the software are very useful when decorative stitches are added and when embroidery is precisely placed just where you want the designs.

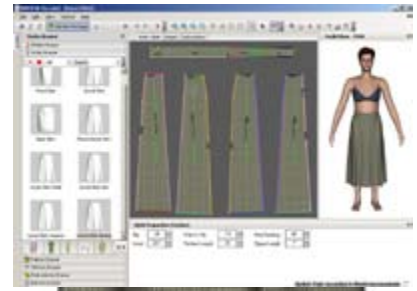


As the designs are rotated, My Label displays a tool tip showing the degree of rotation so that the designs can be rotated in embroidery software as needed.

For those who need extra information about embroidering on different fabrics, the Embroidery Consultant housed within the software provides information about selecting needles, threads, and even designs that are appropriate for various types of fabric. So, if you are new to embroidery, you can gather several tips for embroidery by reading this section of the Help documentation.

The Summer skirt style properties have been altered to shorten the skirt and widen and lower the flare. Finished length was decreased to 19" and the flare was increased to 66". The ease was slightly increased in the hip to 40". To lower the point of the flare, the waist to hip measurement was increased to the maximum of 13". This gives the skirt a "trumpet" effect.

A polka dot knit was chosen for the fabric and the bottom of the skirt was decorated with designs from Studio Bernina Creative Genes Exclusive Design Collection. Some of the designs on the skirt were rescaled from 2" x 2" to 3" x 3". The software displays the exact size of the design so that it can be adjusted properly in embroidery software.



If you don't know how to sew or embroider on knits, once again, the information is only a mouse click away. The Sewing Consultant provides information on types of stitches, needles, and threads to use on different types of fabric.

Additional changes can be made to the fabric properties. Placement of a dominant stripe in a plaid fabric can be moved, so you can make placement decisions based on the actual visual on your body. In addition, you can switch the plaid to a bias grain to see if that would be more pleasing. You can also change the scale of the plaid to replicate a larger plaid.

When Summer fades into Fall, we start thinking of darker colors, longer garments, and boots. For the Fall skirt, the gore skirt was changed to a straight gore. The hem opening was changed to 37", just 1 5/8" less than the hips. This gives a pegged effect to the skirt that actually makes hips look slimmer.

The fabric that was chosen was black and the sheen indicator was changed in the software so that the fabric resembled leather. The arrow is selected and moved to the right

to transform any fabric to leather. Design #09-GG19 from Gothic Grace, an Embroidery Take Out design collection, was selected for the leather skirt. Even though the software adds the design to both sides of the front panel, we can elect to embroider on only one side for an asymmetric look.

When winter settles in, we often look to warmer fabrics so a wool tweed fabric was selected for our winter garment. Some of your body measurements will help you make good decisions for correct garment lengths. For example, you never want a garment to land at the fullest part of the calf.

One of the measurements taken for the software is calf height, so you can figure out where not to place a hemline. The winter skirt was lengthened to 30", just below the fullest part of the calf.



Flare was increased to 60" to give only a slight flare for the heavier wool fabric as compared to the gauze. Design NZ777, from Embroidery Take Out Pack #11895, was added to the high hip area so

that when a short, cropped jacket is used to complete the garment, the design will peek out just below the jacket. A button was added to the center of the design to add a special accent. Buttons can be placed in pre-defined areas, such as, down the front of a jacket or they can be placed anywhere on the garment for decorative effects. These buttons can be re-positioned, angled, and scaled.

The benefits of this graphic software are numerous. The three-dimensional view of your body with your measurements helps you accurately access the garment styles that are appropriate for you. Think of the software as a mirror allowing you the opportunity to try on sewn garments much the same way as you try on ready-to-wear before you buy. You can audition fabrics, embroidery, stitches, and button position before you make the garment. By altering the style properties of the garments, you are able to achieve many different looks, looks for all seasons. The simple-to-operate program shows your reflection in just a few simple steps and makes garment sewing fun again by producing patterns that fit.

