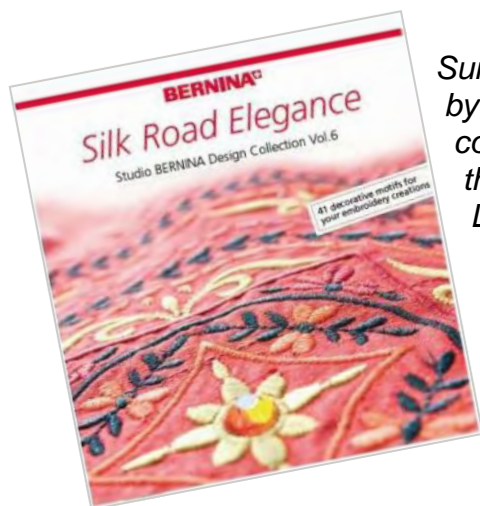


BERNINA⁺

Pheasant Run Denim Skirt

Created by Kristie Smith



Sumptuous designs inspired by the splendor of the East combine to create a skirt that is positively unique. My Label™ 3-D Fashion Pattern Software assists in establishing a personal style that only you can envision. Design, construct, embroider, enjoy!



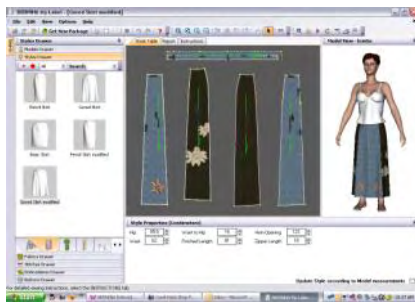
Supplies

- BERNINA® sewing/embroidery machine
- BERNINA® My Label™ Pattern Fitting Software
- Denim (yardage per pattern)
- Armoweft® fusible interfacing (yardage to cover entire piece of denim)
- Jeans Foot #8
- Invisible Zipper Foot #35
- Edgestitch Foot #10/10C
- Embroidery Foot #26
- Silk Road Elegance, Studio BERNINA® Design Collection Vol. 6
- Isacord thread (assorted)
- Yenmet thread (AN-9: blue, S-12: Gold)
- OESD PolyMesh cutaway stabilizer
- 505 Temporary Spray Adhesive
- Large Oval Hoop (**artista** 255 x 145mm)
- Medium Hoop (**artista** 130 x 100mm)
- 80/12 jeans needle
- 4.0 Twin needle
- 70/10 Organ needle for embroidery
- Mettler Metrosene plus thread (1 spool to match fabric, 2 spools of white to contrast)

Cutting Instructions

In the My Label™ Software, open the gored skirt from the Styles folder; modify to suit personal style properties.

Fuse Armoweft[®] interfacing to the wrong side of the entire piece of denim, following the manufacturer's recommendations. Cut pattern pieces from selected fabric.



Embroidery

Convert the machine to embroidery mode, insert a #70 Organ needle, attach Embroidery Foot #26, and thread with Isacord thread, lower the feed dog.

From the Studio BERNINA[®] Silk Road Elegance Design Collection, select design BE10607.ART (Bird). Placement for the bird design will be approximately halfway up the left side of the skirt. Position the templates until the design placement is correct (as in photo or as desired).

Construction

Machine set-up: Insert a #80 jeans needle, thread with Mettler Metrosene Plus to match the fabric, attach Jeans Foot #8, and select straight stitch #1 at default settings.

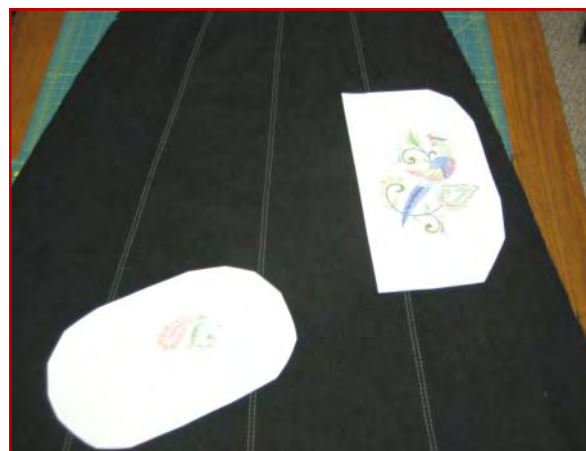
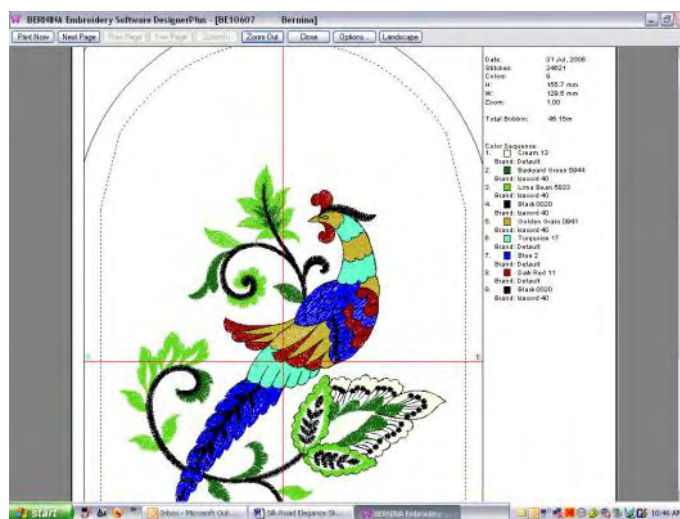
Stitch the back panels together. Attach the Invisible Zipper Foot #35 and insert zipper as per pattern. (See Feet-ures books for extensive instruction on the usage of the zipper feet.)

Once the zipper is inserted, touch the straight stitch #1 and the *Clr* function to ensure that the stitch is at default. Attach the Jeans Foot #8 to the machine and construct the side back pieces to the back pieces. Lay aside. Construct the front and front side seams. (Do not sew side seams; flat pieces are easier to embroider upon.) Press the seams open on all pieces.

Topstitching

Machine set-up: Insert a 4.0 twin needle; engage the *Security Program*; select straight stitch #1 (lengthen the stitch to 5.0 mm); attach Edgestitch Foot #10/10C; thread the top thread path with 2 spools of white Mettler Metrosene Plus thread, and engage the *Needle Down* function.

With the blade of the Edgestitch Foot #10/10C on the seam lines, stitch with the twin needle creating two parallel lines of topstitching.



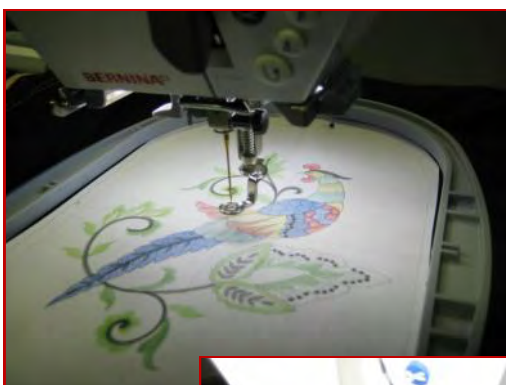
Tip: Any level of BERNINA[®] software allows the printing of paper templates. Use the templates to audition and assist with proper design placement.

Using 505 Temporary Spray Adhesive, adhere two layers of PolyMesh Cut-Away Stabilizer to the wrong side of the fabric where the embroidered bird is to be stitched.

Hoop the fabric and stabilizer into the large hoop. Attach the hoop onto the embroidery machine, adjust size if desired (proportionally or disproportionately), confirm placement, and embroider the design.

Tip: Thread colors can be changed as desired or sewn out in the recommended color scheme. Enjoy the journey and embrace creativity.

Remove the hoop and cut away the excess stabilizer.



Using the printed template for positioning

Stitching the design



From the Studio BERNINA[®] Silk Road Elegance Design Collection, select design BE10604.ART (feather).

Print several paper templates of the design and arrange randomly around the bird design. With 505 Temporary Spray Adhesive, adhere two layers of PolyMesh Cut-Away stabilizer to the wrong side of the fabric where the designs are to be stitched.

Hoop the stabilizer and the fabric into the medium hoop; embroider the design.

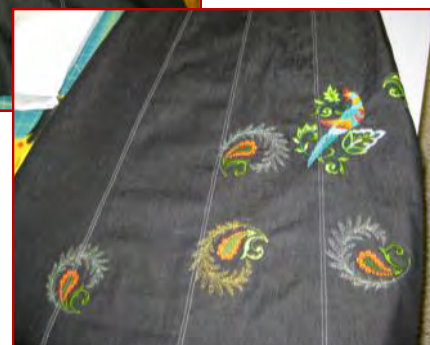
Thread the machine with Yenmet thread. The feathers in the sample were stitched alternating the specified Yenmet Threads for the feather part of the design and Isacord for the remainder.

Continue to re-hoop fabric with stabilizer and embroider the designs until all of the designs are complete.



Re-hoop as needed

Complete all designs



Complete the Skirt

Machine set-up: Convert the machine to sewing mode; Insert a #80 Jeans needle; attach Jeans Foot #8; thread with Mettler Metrosene Plus thread for construction. Stitch the side seams of the skirt.

Topstitching: Insert a 4.0 twin needle; engage the *Security Program*; select straight stitch #1 (stitch length of 5.0mm); attach #10/10C Edgestitch Foot, thread the top thread path with 2 spools of white Mettler Metrosene Plus thread.

With the blade of the Edgestitch Foot #10/10C on the seam lines, stitch with the twin needle creating two parallel lines of topstitching.

Complete the waistband and hem as instructed by the pattern.