

Exclusive Thread Velvet™

**Celebrating
10 Years**

DESIGNS

IN MACHINERY QUILTING

7 Fast & Easy
**Home
Decor
Projects**

**Modern
Threads
For Men**

p 36, 38

**Bold,
Fresh
Monograms**

Behind the
Scenes with
**Martha
Stewart**

p 18

Volume 54 • January/February 2009
www.dzgn.com



wearable

Nordic Splendor

By Nina McVeigh,
For Bernina USA

One of the things that I love about the Classic Monogram Collection from OESD, besides the wonderful monograms, are all the “ornaments” included to use with the monograms. This jacket is a perfect example of what can be done with those ornaments aside from using them with the monograms. It makes this design collection extremely versatile.

Embroidery Products

#856 Classic Monograms
from OESD
505 Temporary Spray Adhesive
OESD Poly mesh Cut-Away
Stabilizer
Bernina Embroidery Software
Bernina My Label (optional)

Materials

Boxy Jacket Pattern from Bernina
My Label Pattern Fitting Software
or Favorite Boxy Jacket Pattern
Medium weight melton wool fabric
per pattern plus an extra 1/4 yd.
1/4 yd. cotton to match wool
1/4 y. Ultra suede
#70 or #80 Microtex needle for
embroidery on suede
#80 Organ needle for embroidery
on wool

Step 1. Creating the Embroidery Designs

Back Yoke Design

In Bernina embroidery software, open design #39 from Classic Monograms and rotate the design 90 degrees. Select and duplicate the design. Move the duplicate copy above the original.

Duplicate the design again and vertically mirror image the duplicate. Move the copy up and to the left.



Insert design #34 and move it up and to the left. Horizontally mirror image the design. Rotate and move it into position. Select this design and the design just below it and horizontally mirror image the selected designs. Choose Mirror-Merge Horizontal. Move the cursor so that center line is in the center of the entire design.



Change thread colors if desired. Select the entire design and then the Sequence by Color icon. A dialogue box will appear, click OK.



Colors are sequenced so you only have 1 color change. Save as Back Yoke.



Front Tabs

Open design #30. Resize to 79%. Select Mirror Image Horizontal. Rotate the design 41 degrees. With the design selected, choose the Mirror-Merge Vertical. The satin stitching should just touch and the straight stitch to the left should overlap slightly.



Insert Design #32. Rotate 58 degrees. Move into position to the right of the previous design. Change thread colors if desired and then sequence by color as in the yoke design to eliminate thread changes. Save as Front Tab design.



Design #856
'Classic Monograms'
by OESD
www.embroideryonline.com

On
Back

Back Belt

Open the Front tab design. Select the first part of this design on the left end. Choose Mirror-Merge Horizontal to place a mirrored design on the right end. Save as Back Belt.



Sleeve End

Open design #33. Change the thread colors if desired. Select the design, rotate it 135 degrees and then ungroup it. Choose the Polygon Select Tool and draw a box around a portion of the design.



With this portion of the design selected, move it away from the rest of the design and group it.

Designs in Machine Embroidery





Repeat for the other side of the design. Select the left portion of the design and rotate it 15 degrees, select the right portion of the design and rotate it 15 degrees. Reposition the left and right sides to resemble the finished design. Enlarge entire design 145%. Save the design as the Sleeve End.



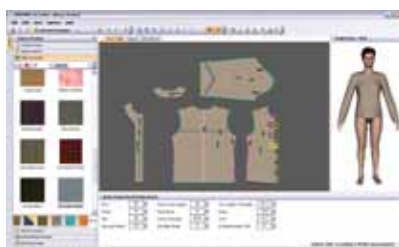
Buttonholes

Open design #32. Rotate the design 150 degrees. With the design deselected, go to the Arrange Menu>Add Buttonholes. Place the buttonhole in the center of the original design. Right click for object properties and choose the style and length of desired buttonhole. Click apply and OK. With both the buttonhole and design selected choose the align centers icon. Select the buttonhole only, go to the Arrange Menu>Remove Overlap. This will remove all stitching under the buttonhole.



Step 2. Designing the Jacket

Using My Label Software, select The Boxy Jacket. You can select the fabric that you are using and simulate the jacket on the model (you) to see what it will look like.



You can also draw the jacket details on the pattern pieces.



Draw a horizontal line across the jacket back. This will be a cutting line for the jacket yoke. Be sure to add a 5/8 inch seam allowance to bottom of jacket yoke and top of lower jacket. The lower jacket can be cut on the center back line. You will only be using half of the lower jacket.

Draw a shaped line across the bottom of the sleeve as shown. After printing off the pattern, trace the sleeve bottom, up to the shaped line. This will become the additional pattern piece for the sleeve. You may also draw the suede tabs on the jacket front to view them. Print out the Boxy Jacket as well as the collar and collar stand for the classic blouse.

Cutting the Jacket

Cut out back yoke from the cotton fabric. Lay the back yoke pattern on the wool. Draw the yoke on the wool and cut out around the drawn lines. Do not cut out on the lines until after it is embroidered.

Lay the lower jacket center back 3" off the fold. This will become the pleat in the back of the jacket. Mark the center back line.

Lay the sleeve bottom pattern piece that you created on the wool. Draw around the pattern piece and then, just like the yoke, cut around the drawn lines but not on them.

Embroidering the Jacket

Open the design for the back yoke. Hoop two layers of the poly mesh stabilizer and spray with 505 Temporary Spray Adhesive. Center the fabric in the mega hoop. Depending on the size of the yoke, you may want to slightly lengthen the design to fill the area of the yoke. Embroider, and then cut out the yoke. Repeat for the sleeve bottom using the Sleeve End design.

Open the Front Tab design. Hoop two layers of the poly mesh stabilizer in the medium hoop and spray with the 505 Temporary Spray Adhesive. Lay the ultra suede in the hoop. Embroider three of the Front Tab designs making sure to space them far enough apart so that three tabs may be cut out. At the same time open the Back Belt design and embroider. Cut out a desired Tab shape and a desired Back Belt shape that accommodates the embroidery.

Step 3. Constructing the Jacket

Many of the construction techniques used are to avoid the bulk of multiple layers of fabric in the seams of the garment.

Jacket Back

Baste the lower jacket back on the marked center back line, right sides together. You have created a pleat on the inside of the jacket. Press pleat open. Seam cotton yoke to bottom of jacket.

Cut a 3/8" strip of ultra suede the width of the yoke. Using a narrow zig zag stitch and a non-stick foot, stitch the strip of ultra suede to the bottom raw edge of the wool yoke, overcasting the edge of the wool as you apply the suede.



Edge stitch the opposite side of the strip using a straight stitch. Pin this yoke piece to the jacket back, matching shoulder seams, neck edge and armhole edges. Baste into place.

Collar

To prepare the collar, lay the two collar pieces wrong sides together. Trim off the seam allowance on the top edge and ends of the collar. Lay 3/8" strips of ultra suede on the edges of the color pieces. Using a narrow zigzag, stitch down the suede trim, overcasting the edges at the same time.



Edge stitch the opposite side of the suede strips. Baste the lower edges together on the 5/8" seam allowance. Working with the collar stand, trim away the seam allowance on the upper curved edge of the stand. Insert the collar up to the basting. The collar seam allowance may need to be clipped up to the seam allowance.

Baste the collar stand edges together, holding the collar in place. Place an ultra suede strip on the right side of the upper edge of the collar stand and zig zag in place. Edge stitch opposite side of the strip. Baste bottom edge of collar stand on the 5/8" seam line. Set aside.

Jacket Front

Cut four 3/8" ultra suede strips the length of the jacket. Cut off the front and neck edge seam allowance from the jacket fronts and facings. Mark a line, on the jacket front, 1/2" from the front edges. Position a suede strip on this line and edge stitch down. Place the first embroidered suede tab 1 1/4" from the top edge and edge stitch down. The tabs are placed 3" apart.



Seam jacket fronts to jacket back. Seam front facings to back facing. Finish seam edges as well as facing edge, I like to finish the seams of my unlined jacket with a Hong Kong finish. This is simply done by bias binding the edges.



Using the Bernina Bias Binder is quick and easy and always looks professional.

Pin facings inside the jacket with wrong sides together, cut edges even. Place a suede strip along front edges of jacket front. Using a narrow zig zag, stitch down the suede trim, overcasting the front edges at the same time. Edge stitch the opposite edge.

Insert the collar stand between the jacket and facing. The collar stand may need to be clipped to form a curve. Baste neck edge, holding collar stand in place.



Cover edge with a suede strip and apply as before.



Stitch side seams, finish seams with bias binding.

Sleeves

Place the sleeve end on top of the bottom sleeve edge. Overcast top edge as you apply extra piece to the bottom of the sleeve. Cover this top edge with a suede strip. Trim off hem edge of sleeve. Sew sleeve seam and finish seam with binding. Attach suede trim to bottom edge of seam. Insert sleeves, finish with binding.

Bind bottom edge of jacket and hem.



wearable

Back Belt

Spray the back of the belt with a little 505 Temporary Spray Adhesive. Adhere the suede piece to a scrap of wool. Cut out the wool so that edges are even with the wool. Overcast edges with a narrow zigzag. Place belt just below waistline level, centered over back pleat. Edge stitch in place. Remove basting opening the pleat in the back of the jacket.

Embroider Buttonholes

The buttonholes are embroidered between the tabs and below the last tab. Center the design between the tabs, with the actual buttonhole on the inner suede trim.

There will probably not be room to use the entire buttonhole design for the top buttonhole. Forward through the design so the actual buttonhole, which is your third color, can be stitched on the suede trim.



Visit Designs in Machine Embroidery for additional projects and inspiration!