

Embroidery...

It's not just a design on a shirt

By Debbi Lashbrook, *Bernina of America*

Your embroidery software and machine can be very helpful in the construction of garments. Making curved or pointed collars and pockets and even aligning buttonholes can be simplified with software. It is as easy as selecting the tools in the software and using your pattern as a guideline to make accurate and consistent shapes that stitch out beautifully.



Why use embroidery software for garment construction?

For one reason, the accuracy of stitching will increase when stitching identical shapes. By using software, you can be assured that the pocket curves, collar points, or shirt cuff shapes are the same. Utilize features such as Snap to Grid and Zoom tools for accuracy.

In addition, when embroidering these garment pieces, there will be no distortion of the fabric, especially when stitching bias edges. You can also experience increased stitching speed when using the embroidery machine as the machine will stitch faster than

we usually care to stitch when sewing garment pieces together.

For a garment style that you sew over and over, you can use the same digitized files repeatedly and save even more time because the set up of the files only has to be done once. In addition, you can often eliminate the time that it takes to sew or press interfacing to the garment pieces—just embroider them onto the fashion fabric as you stitch! Embroidering buttonholes is a breeze after setting up the file in the software and the alignment process takes much less time to stitch out.

The garment illustrated was completed using Bernina Embroidery Software to guide the machine to stitch the collar fall, the collar stand, the cuffs, and the buttonholes. The tailored shirt pattern was generated in Bernina My Label software. Embroidery designs from the Tassels and Textures embroidery collection were also placed on the garment in exact positions using the software. You can choose some or all the techniques to complete your next garment. Use embroidery software anytime you need exact duplicates of garment pieces.



Designs by JuJu
Adorable machine embroidery designs for babies and children
...and the people who love them

Specializing in adorable, whimsical designs for babies and children.
We carry a large variety of applique, filled and redwork machine embroidery designs!
INSTANT DOWNLOAD AVAILABLE!
Fantastic monthly specials and **FREE** designs available on our website for you to download and sample.

Visit us today and find out why so many people choose us for their embroidery design needs.
You are sure to find something you love!

WWW.DESIGNSBYJUJU.COM

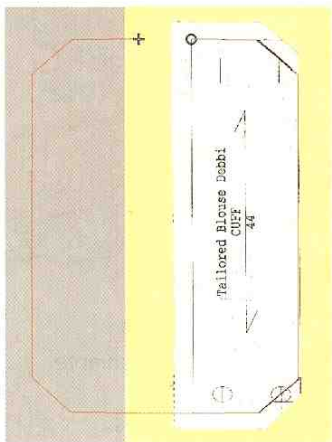
Mention **DIME** with your order and receive an extra **FREE** set of your choice with your order

Digitizing the Cuffs

Scan the cuff pattern and save on your computer.

Note: The cuff pattern from My Label software was changed by drawing lines across the lower end of the cuff as shown on the pattern piece.

Load the picture in Picture View and return to the Design View to draw the stitching lines. Select the artista Mega Hoop. Select the Open Object Tool and draw around the stitching lines of the cuff, beginning at the seam allowance edge and leaving the side that will attach to the sleeve open. Select the one completed cuff and then select Edit/Duplicate to make the second shape an exact duplicate of the first. Move the second cuff to the other side of the hoop.



Save the file as Cuffs.

Experiment and have fun with changing the shape of the cuffs and collars to suit your fancy. It is quick and easy to draw unusual shapes so you can take one basic pattern and make it look different by changing the collar and the cuffs of the pattern pieces.

Stitching the Cuffs

Cut two rectangles of fashion fabric to fit the Mega Hoop. Place interfacing on the wrong side of one rectangle and place the two fashion fabrics right sides together. Hoop the sandwich with Ultra Clean & Tear stabilizer. Open the cuff file and stitch the cuffs.

Remove the hoop and remove the stabilizer from the fabric sandwich. Cut down the middle to separate the cuffs, grade the seam allowances, and notch or clip as needed. Press and turn the cuffs to the right side and enjoy your perfectly matched cuffs!



Digitizing a Pocket

Scan the pattern piece and save on your computer. Select Picture View to load the picture and return to Design View to draw the pocket. Select the Open Object Tool and draw a line across the top fold line of the pocket. This line will serve as a placement line. Change colors to program a color stop and draw a line all around the pocket stitching line of the remaining three edges. To form an exact straight line along the pocket edges, hold the Control key as you digitize the corners of the square pocket with left clicks.



Save the file as Pocket.

If you are drawing a curve shape, you may want to draw one half of the curve; then make a mirror of the curved line. This will insure that an exact duplicate curve is stitched.

Stitching the Pocket

Hoop Stabil-Stick Tear-Away stabilizer in the large oval hoop and remove the paper backing. Open the pocket file and stitch the placement line on the stabilizer. Cut a rectangle of fabric 2" longer and 3" wider than the pocket pattern piece. Interface the wrong side of this rectangle. Finish the edge of the pocket facing if desired. Fold and finger press the facing of the pocket to the pocket so that right sides are together. Align the foldline of the fabric with the

placement line that was stitched on the stabilizer. Stitch the second color of the pocket file.

Remove the pocket; grade the seam allowances of the folded edge of the pocket. You can miter the corners of the pocket if you wish. Use the line that stitched around the pocket to fold and press the seam allowances to the wrong side of the unlined pocket. The pocket is now ready to sew on the blouse.



Log onto www.dzgn.com and explore the expanded edition of this technique. You'll find digitizing and stitching instructions for the collar fall, collar stand and buttonholes.

You can find additional information at www.bernausa.com.

Click on "See It! Share It!"

From Blank to Beautiful in No Time!

Embroiderable Paper

Kiwi Paper

Spa Essentials

Your Favorite Embroidery Supplies

Showcase Your Embroidery in Acrylic

Catch Cover Button Fever!

100% Cotton Towels Dunroven House

Blanks, Supplies Designs
We Feature Madeira Threads, a Full Line of Stabilizers and Notions

The Sewphisticated Stitcher

1-866-210-0072 www.TheSewphisticatedStitcher.com www.ilovethread.com